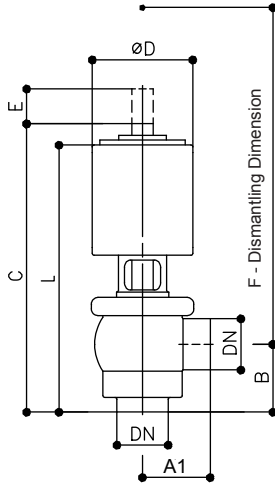
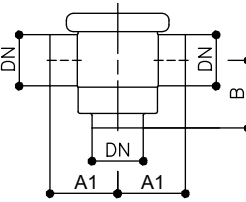
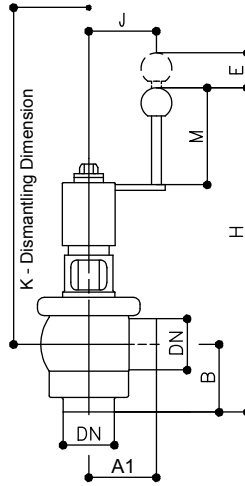


Valve Dimensions

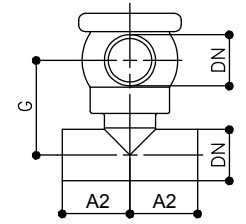
SVP Select Hygienic & Aseptic Right Angle/Double Right Angle/Cross Valves



Right Angle
Manual Select 270
Pneumatic Select 370



Double Right Angle
Manual Select 271
Pneumatic Select 372



Cross
Manual Select 270
Pneumatic Select 370

inches	OD-Tube	A ₁	A ₂	B	C ₁ *	C ₂ *	ØD	E ₁ *	E ₂ *	F ₁ *	F ₂ *	G	H ₁ *	H ₂ *	J	K ₁ *	K ₂ *	L ₁ *	L ₂ *	M
	1.0"	3 1/8	2 1/8	1 15/16	10 3/4	12 5/16	4 1/8	1/2	1/2	10 13/16	14 7/16	2 1/2	12 5/8	14 3/8	2 3/4	12 5/8	15 3/4	9 1/2	11 5/16	3 15/16
1.5"	3 1/8	2 3/8	2 3/16	11 1/16	12 3/4	4 1/8	3/8	1/2	11 1/4	15 3/8	3	12 7/8	14 5/8	2 3/4	13	17 1/8	9 15/16	11 3/4	3 15/16	
2.0"	3 15/16	2 7/8	2 9/16	11 9/16	13 1/4	4 1/8	9/16	5/8	12	18 1/16	3 11/16	13 3/8	15 3/16	2 3/4	13 3/4	18 1/8	10 5/8	12 3/8	3 15/16	
2.5"	3 15/16	3 1/8	2 3/4	13 3/4	15 9/16	5 1/16	1 1/16	7/8	14 3/4	22 11/16	4 1/8	14 13/16	16 13/16	3 15/16	15 3/4	20 11/16	12 13/16	14 3/4	3 15/16	
3.0"	4 3/4	3 3/8	3 1/8	17	19 1/16	6 1/16	7/8	1 1/16	17 15/16	23 9/16	4 13/16	15 3/4	17 15/16	3 15/16	16 3/4	22 1/16	15 3/4	17 15/16	3 15/16	
4.0" ³	5 7/8	4 1/8	3 9/16	17 5/8	19 11/16	6 1/16	1 1/8	1 1/4	19 1/8	25 9/16	5 3/4	16 3/8	18 9/16	3 15/16	18 1/8	24 7/16	16 5/8	18 13/16	3 15/16	

Note: Values in fractional inches have been rounded to the nearest 1/16 inch

millimeters	OD-Tube	A ₁	A ₂	B	C ₁ *	C ₂ *	ØD	E ₁ *	E ₂ *	F ₁ *	F ₂ *	G	H ₁ *	H ₂ *	J	K ₁ *	K ₂ *	L ₁ *	L ₂ *	M
	1.0"	80	54	50	273	313	104	13	12	275	366	63.7	320	365	70	320	400	242	287	100
1.5"	80	60.3	55	281	324	104	10	12	285	390	75.6	327	372	70	330	435	253	298	100	
2.0"	100	73	65	294	337	104	14	16	305	459	93.4	340	385	70	350	460	270	315	100	
2.5"	100	79.4	70	350	396	129	18	22	375	577	104.8	377	427	100	400	525	325	375	100	
3.0"	120	85.7	80	432	484	154	22	24	455	598	122.6	400	455	100	425	560	400	455	100	
4.0" ³	150	104.8	90	447	500	154	28	31	485	650	146.3	416	471	100	460	620	423	478	100	

*₁ C₁/E₁/F₁/H₁/K₁/L₁: Hygienic execution

*₂ C₂/E₂/F₂/H₂/K₂/L₂: Aseptic execution

³ Pneumatic valves spring to open - air to close (87 psi control pressure) standard with booster size II (dimensions see booster)

Südmo North America Inc.

1330 Anvil Drive, Rockford, IL 61115 USA

T 815.639.0322 • F 815.639.1135

E info@sudmona.com • I www.sudmona.com

Südmo North America Inc. reserves the right to make changes in the technical specifications at any time.

2211-0901

SVP Select

Norit
leading in purification

Südmo